



# CABLE TRANSIT CFS-T RR3

Trefoil applications



# THE IDEAL FIT FOR TREFOIL POWER CABLES IN THE ENERGY AND INDUSTRY SECTOR

CFS-T RR3

CFS-T RR3 is the ideal solution for holes with pre-pulled trefoil low, medium and high voltage power cables, offering excellent fire and sealing protection.



## FIRE, WATER, DUST AND RODENT PROTECTION OF CABLES THROUGH WALL AND FLOOR PENETRATION

### Product value proposition

- Easily fits both new and existing cables due to flexible product design
- Fast and flexible installation in concrete using various types of sleeves and cast-in methods
- Adapter color coding makes installation and inspection very easy
- Broad application fit, from new-build projects to maintenance, repair and operation projects
- Suitable for highly corrosive environment (C5)
- High penetration flexibility of two plug sizes covering cable diameter range (including core)
- Proven firestop performance without additional insulation

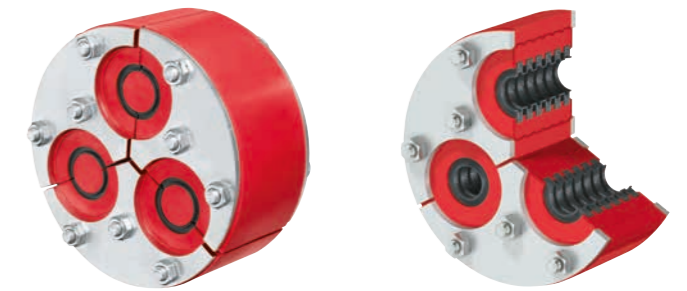
### Technical attributes

- Fire resistance: UL 1479, F: 2h (no add insulation) EN 1366-3, EI 120
- Water resistance: 0.5 bar
- Flood resistance: 1 bar
- Ingress protection: IP 65, 66, 67, 68
- Blast resistance
- Rodent resistance



### CFS-T RR3 150

Adapters	Cable diameter	CFS-T adapter system
1	49–51 mm	Base
2	44–48 mm	Red L
3	39–43 mm	Grey L
4	34–38 mm	Back M + core
5	32–33 mm	Ring Red S
6	27–31 mm	Grey S
7	23–26 mm	Black S



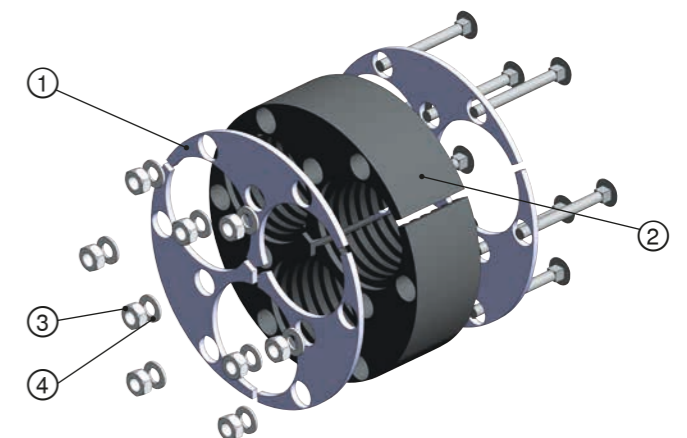
### CFS-T RR3 200

Adapters	Cable diameter	CFS-T adapter system
1	76–78 mm	Base
2	70–75 mm	Black XL
3	64–69 mm	Red XL
4	58–63 mm	Grey XL
5	52–57 mm	Black L Core
6	49–51 mm	Ring Red L

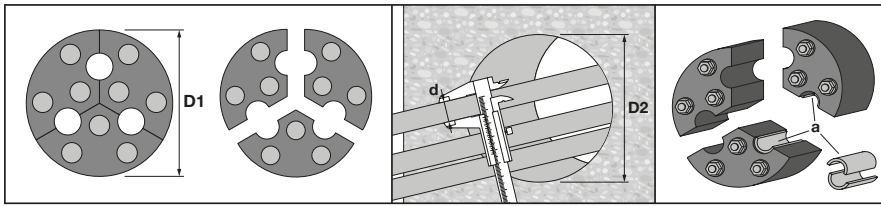


### PRODUCT COMPOSITION

No.	System	Material
1	Press plate front	1.4571/AISI 316
2	Sealing system	EPDM Rubber
3	Screw	1.4436/AISI 316
4	Washer	1.4436/AISI 316



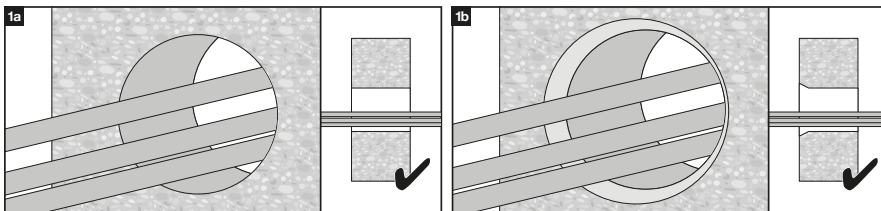
# INSTRUCTIONS FOR USE



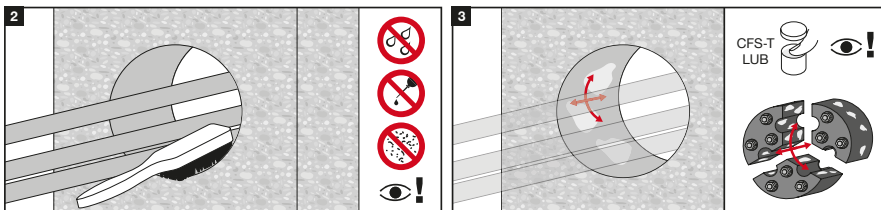
- Outer diameter of plug seal CFS-T RR3 (D1). Inner diameter of core drill hole/ wall sleeve (D2).
- Outer diameter of cable (d). Cable adapter (a).

RR3 150 mm		d	a	RR3 200 mm		d	a
Type	CFS-T RR3 150	49 – 51 mm	Basic	Type	CFS-T RR3 200	76 – 78 mm	Basic
d	23 – 51 mm	44 – 48 mm	Adapter red L	d	49 – 78 mm	70 – 75 mm	Adapter black XL
D1	150 mm	39 – 43 mm	Adapter grey L	D1	200 mm	64 – 69 mm	Adapter red XL
D2	150 – 152 mm	34 – 38 mm	Adapter black L	D2	200 – 203 mm	58 – 63 mm	Adapter grey XL
	9 pcs. M8 × 90	32 – 33 mm	Adapter ring red			52 – 57 mm	Adapter black L
		27 – 31 mm	Adapter grey S			49 – 51 mm	Adapter ring red L
		23 – 26 mm	Adapter black S			0	Core
		0	Core				

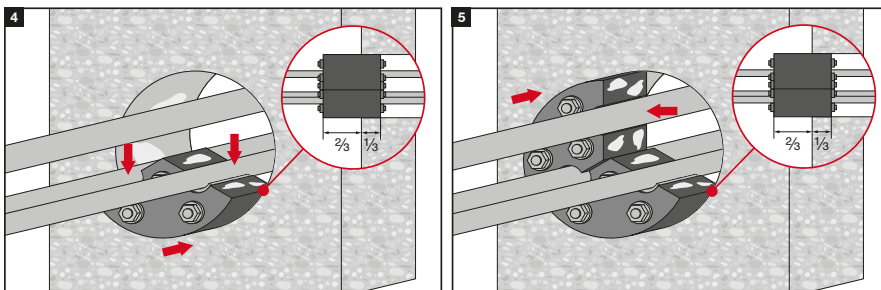
- Select the correct adapter to properly seal the cables according to given table.



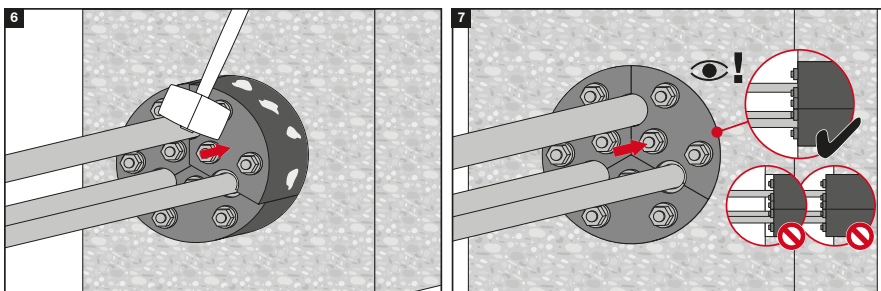
- CFS-T RR3 plug suitable for both round and bell mouth openings.



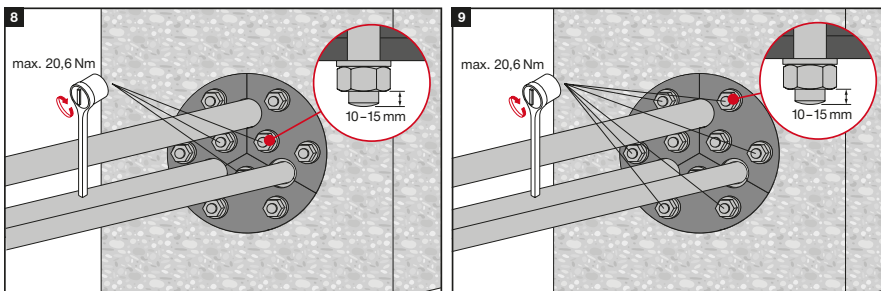
- The inside of the opening must be clean and free from dust and oil.
- Use CFS-T LUB on surface of opening and plug to prepare installation.



- Install the 1st piece of CFS-T RR3 plug at the bottom and push 1/3 of its length into the opening. Continue with the next plug piece accordingly in clockwise direction.



- Use a rubber mallet with gentle strokes to install CFS-T RR3 flush with opening.
- CFS-T RR3 plug seal pieces need to be installed flush to each other.



- Use a torque wrench and start to tighten nuts crosswise from inside to outside.
- Installation is finished as soon as a screw protrusion of 10 – 15 mm is achieved.

