

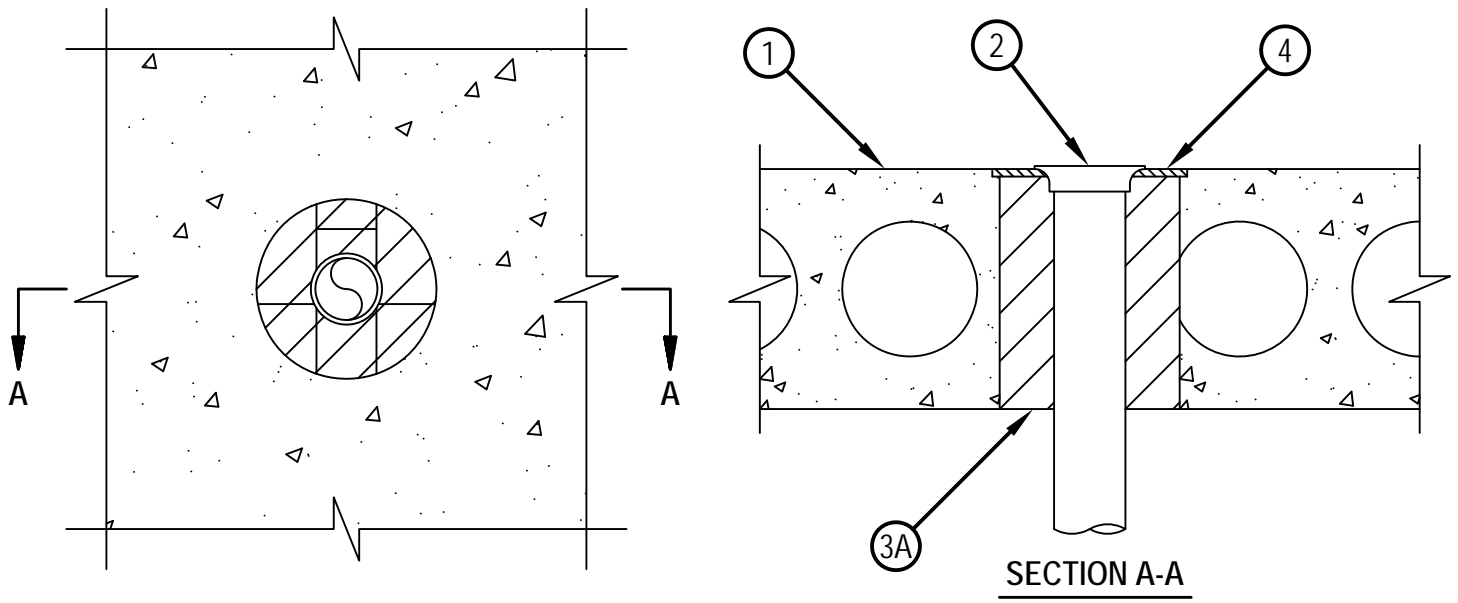


Classified by
Underwriters Laboratories, Inc.
to UL 1479 and CAN/ULC-S115

System No. F-B-2031

FB 2031

ANSI/UL1479 (ASTM E814)	CAN/ULC S115
F Rating — 3 Hr	F Rating — 3 Hr
T Rating — 0 Hr	FT Rating — 0 Hr
	FH Rating — 3 Hr
	FTH Rating — 0 Hr



System tested with a pressure differential of 2.5 Pa between the exposed and the unexposed surfaces with the higher pressure on the exposed side.

1. Floor Assembly — The 3 hr fire rated UL Classified hollow-core Precast Concrete Units* floor assembly shall be constructed of the materials and in the manner specified in the individual J900 or K900 Series Design in the Fire Resistance Directory. Floor may also be constructed of any min 8 in. (203 mm) thick reinforced lightweight or normal weight (100-150 pcf) or (1600-2400 kg/m³) concrete. Diam of opening shall be max 6 in. (152 mm).

See Precast Concrete Units (CFTV) category in the Fire Resistance Directory for names of manufacturers.

2. Drain Piping — Nom 2 in. (51 mm) diam (or smaller) Schedule 40 solid core or cellular core polyvinyl chloride (PVC) pipe. The annular space between pipe and periphery of opening shall be min 1 in. (25 mm) and max 2-5/8 in. (67 mm). Drain piping rigidly supported on bottom side of floor assembly.

3. Firestop System — The firestop system shall consist of the following:

A. Fill, Void or Cavity Material* — Fire Block - 2 in. (51 mm) thick by 5 in. (127 mm) wide by 8 in. (203 mm) long blocks cut and inserted lengthwise into opening to be firmly packed and completely fill the entire annular space. Either one or a combination of the block types specified below may be used.

HILTI CONSTRUCTION CHEMICALS, DIV OF

HILTI INC — FS 657 Fire Block or CFS-BL Firestop Block

4. Metallic or Nonmetallic Strainer — Max 6 in. (152 mm) diam cast iron, polished brass, polished stainless steel or PVC snap-in strainer installed after installation of drain piping.

5. Shower Floor Assembly (Not shown) — One-piece molded fiberglass construction with ribbed underbody. Shower floor assembly provided with min 2-1/2 in. (64 mm) wide by 2-1/2 in. (64 mm) high threshold. Nom 2-1/2 in. (64 mm) diam opening in shower floor assembly provided with "no-hub" sanitary waste connection with elastomeric compression-style gasket to allow for installation of floor drain.

*Bearing the UL Classification Mark



Hilti Firestop Systems

Reproduced by HILTI, Inc. Courtesy of
Underwriters Laboratories, Inc.
December 13, 2011