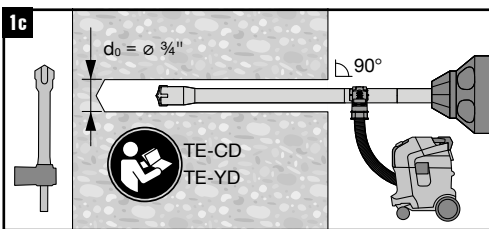
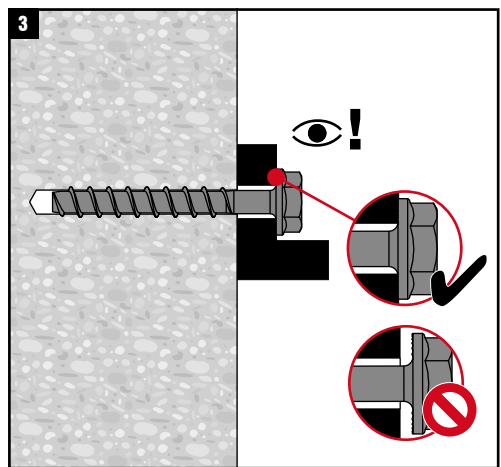
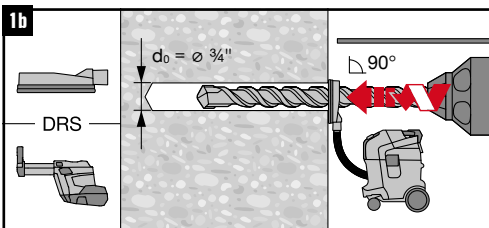
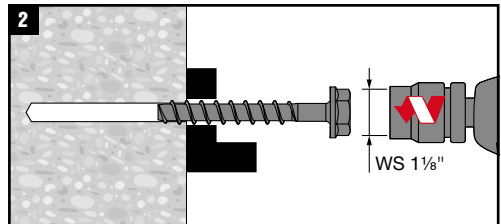
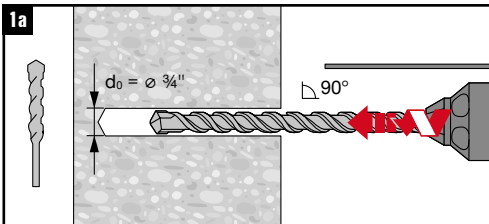


KH 3/4"	h ₁ *	h _{nom1} = 4.0"	h _{nom2} = 6.25"
		t _{fix1} max (in.)	t _{fix3} max (in.)
3/4" × 4 1/2"	4 7/8" - t _{fix}	1/2"	-
3/4" × 5 1/2"	5 7/8" - t _{fix}	1 1/2"	-
3/4" × 7"	7 3/8" - t _{fix}	3"	3/4"
3/4" × 9"	9 3/8" - t _{fix}	5"	2 3/4"

	Nuron SIW 4-22		
	Nuron SIW 6-22		
	CPC SIW 22T/18T-A		
	CPC SIW 9-A22/A18		
		95 ft-lb	95 ft-lb



*For non-hole cleaning installation (steps 1.a or 1.b), make sure to drill deep enough to achieve h₁, taking into account the depth of debris remaining in the hole

