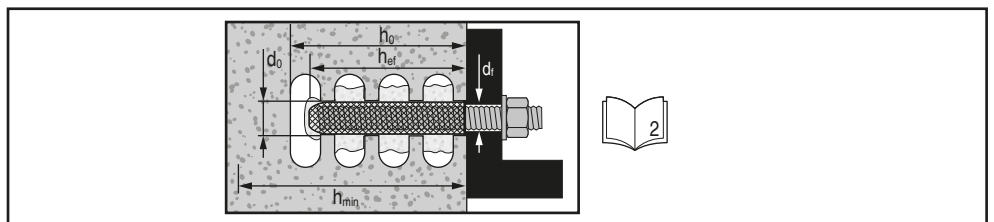
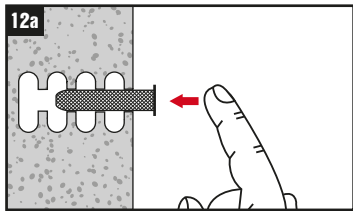
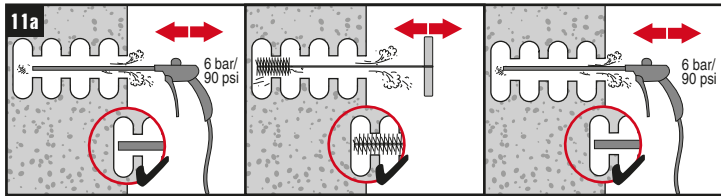
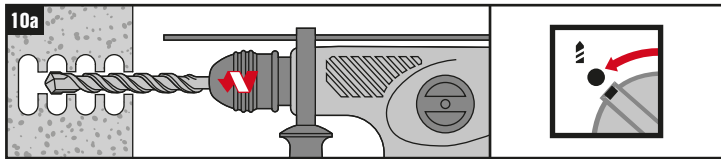


Global (USA, Canada)	USA, Canada
HIT-HY 70, HIT-HY 270, HIT-MM PLUS	HIT-HY 70
HAS HIT-V HIT-C	HAS-E HAS-R Rebar



d	d ₀		h ₀	h _{ef} min-max	h _{min}	HIT-RB	d _f	T _{max}	T _{max}		
								[Nm]	[ft lb]	[Nm]	[ft lb]
12	12 / 1/2"	M6 / 1/4"	h _{ef} +10 mm h _{ef} +0.4"	170...535 mm 6 3/4" - 21"	h _{ef} + 30 mm h _{ef} + 1.2"	12 / 1/2"	7 / 9/32"	≤3	≤2.2	≤10	≤7
16	16 / 5/8"	M8 / 5/16" M10 / 3/8"				16 / 5/8"	9 / 3/8" 12 / 7/16"	≤3 ≤4	≤2.2 ≤3	≤10 ≤13	≤7 ≤10
22	22 / 7/8"	M12 / 1/2"			h _{ef} + 2 d ₀	22 / 7/8"	14 / 11/16"	≤6	≤4.5	≤41	≤30

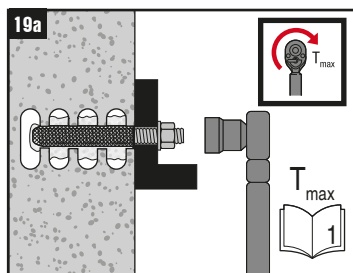
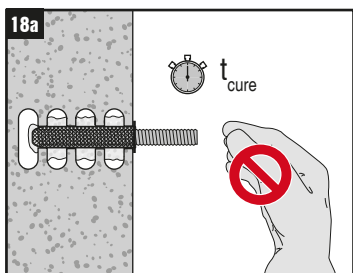
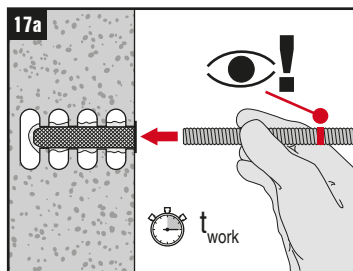
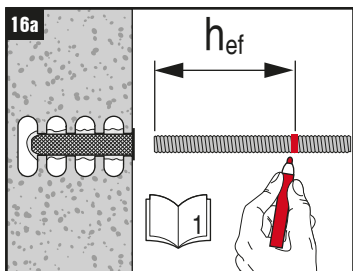
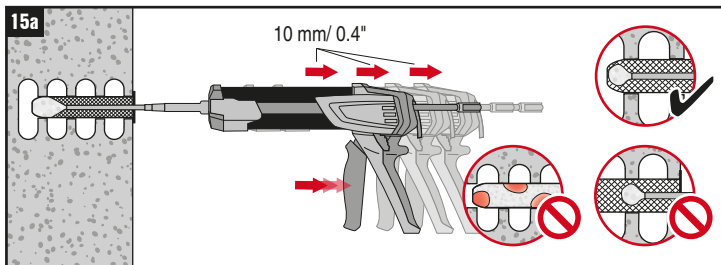
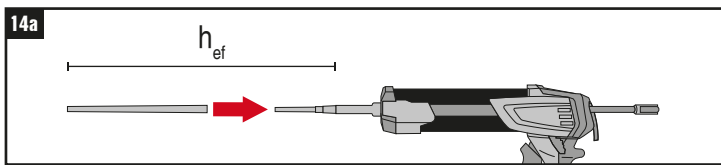
A **Global**
 (USA, Canada)



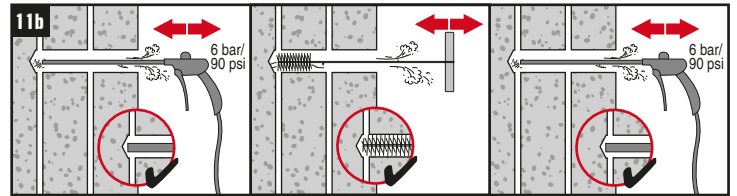
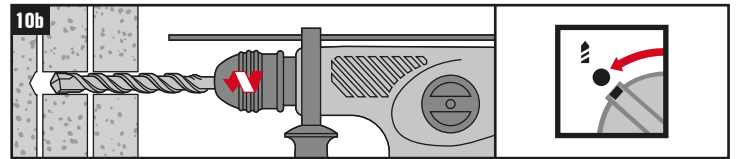
13a

HDM
HDE 500-A

HIT-HY 70,
HIT-HY 270,
HIT-MM PLUS



B **USA**
Canada



12b

HDM
HDE 500-A

HIT-HY 70,
HIT-MM PLUS

